

COPENHAGEN SCHOOL OF DESIGN & TECHNOLOGY (KEA)



Copenhagen
Denmark

KEY FACTS

Subject Area Architecture and Building or Digital Media Global

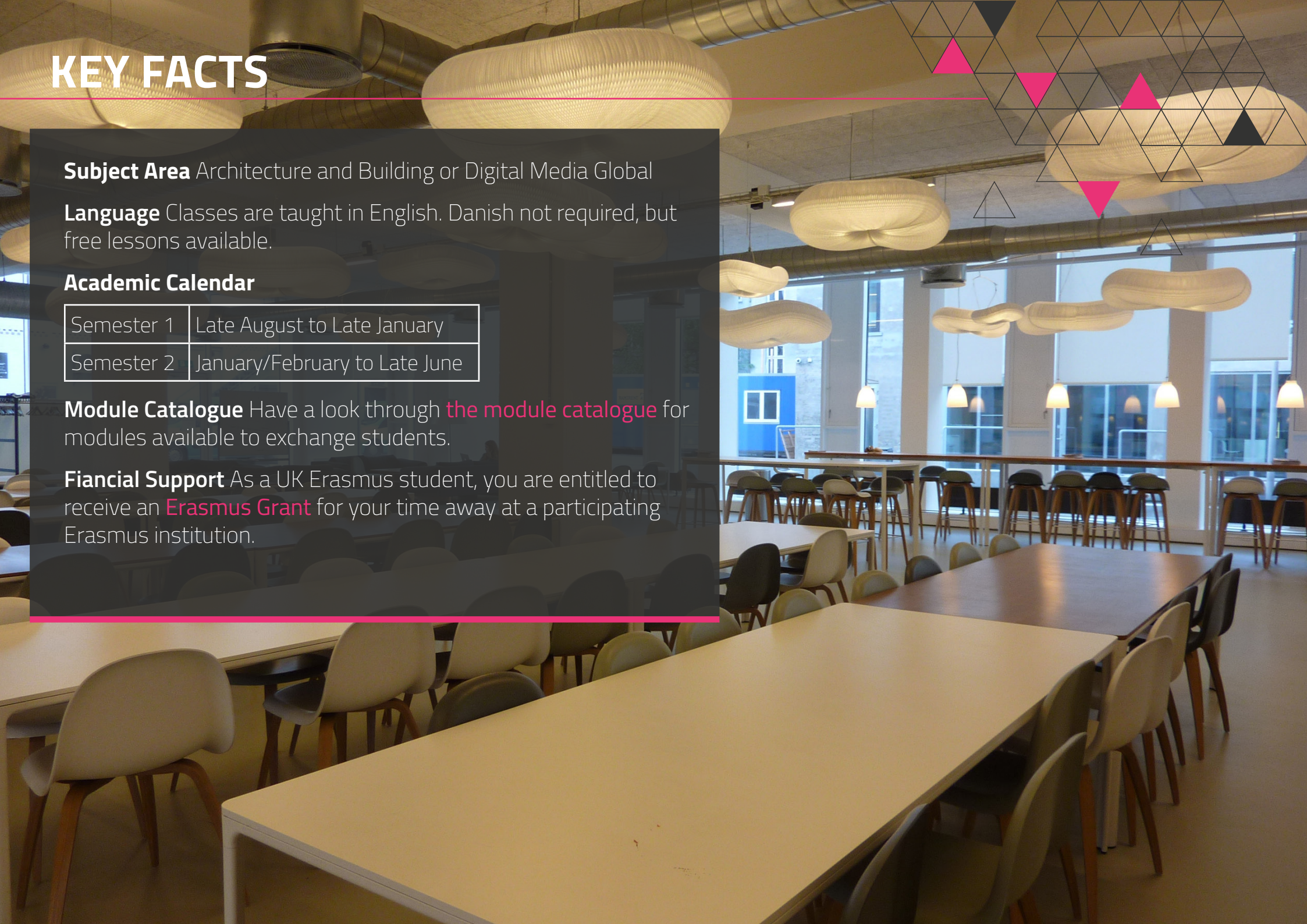
Language Classes are taught in English. Danish not required, but free lessons available.

Academic Calendar

Semester 1	Late August to Late January
Semester 2	January/February to Late June

Module Catalogue Have a look through [the module catalogue](#) for modules available to exchange students.

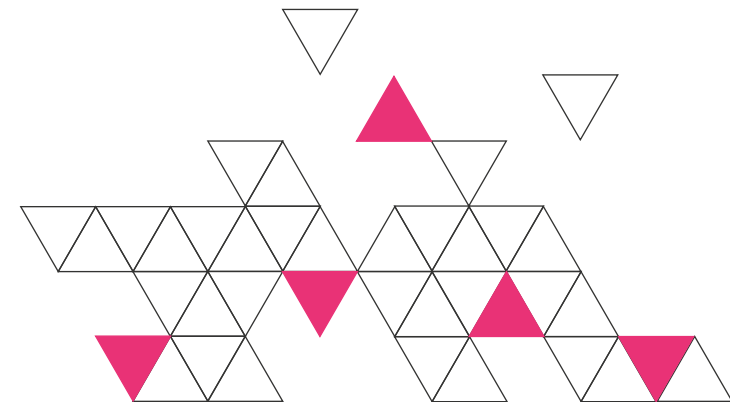
Financial Support As a UK Erasmus student, you are entitled to receive an [Erasmus Grant](#) for your time away at a participating Erasmus institution.





CONTENT

- 4 The City
- 5 The University
- 7 Accomodation & Living
- 8 Contacts
- 9 Student Experiences



COPENHAGEN, DENMARK

Denmark is steeped in a rich history, just waiting to be discovered. Come and find your own Viking treasures, walk amongst ancient rune stones or feel history come to life at Denmark's castles and manor houses.

The premier capital of Northern Europe is Scandinavia's most fantastic city and the center of the most dynamic region in Europe, the Øresund Region. The city is one of Europe's oldest capitals with an exclusive royal touch - the monarchy in Denmark is the oldest in the world. Many Danish castles are still used by the Royal Family today, including Queen Margrethe, Crown Princess Mary and Crown Prince Frederik.

Copenhagen is a coastal town and the shoreline outside the citadel sits the little mermaid - a well-known sculpture that depicts the protagonist of Hans Christian Andersen's fairy tale "The Little Mermaid". Anyone who wants to take a dip find several fine beaches around the city.

Copenhagen is the coolest kid on the Nordic block. Edgier than Stockholm and worldlier than Oslo, the Danish capital gives Scandinavia the X factor.

Its cobbled, bike-friendly streets are a hyggelig (cosy) concoction of sherbet-hued town houses, craft studios and candlelit cafes. Add to this its compact size, and you have what is possibly Europe's most seamless urban experience.

MORE INFO

visitcopenhagen.com
visitdenmark.com
copenhagen.com



Population 1.2 million
Currency Krone (DKK)
Time difference GMT+1

COPENHAGEN SCHOOL OF DESIGN & TECHNOLOGY

Københavns Erhvervsakademi



Copenhagen School of Design and Technology is an Academy of Higher Education which offers over 30 different educational programmes at Bachelor degree and Academy Professional degree levels.

We offer a wide range of programmes in English within the fields of Design, communication, construction and Technology. Focused on providing practical and business-oriented programmes, which enable our graduates to act innovatively when they go out into the job market.

KEA currently consists of 8 different locations, each with their own features that are available to all students. KEA's campus is spread across Copenhagen with the result, that each department is greatly influenced by the community it is a part of. Taking a tour of KEA's campus is a good way to experience the diversity of the city from the noble Hellerup to the hip Nørrebro and the vibrant, multi cultural North West district.

The study environment at KEA is relaxed and informal. It has an open learning environment e.g. not all class rooms have walls, teachers wear casual clothing and students address them by their first names.

 kea.dk

 Guide for International Students

 University Videos

Erasmus code COPENHA58

No of students 8000+

Style of study Study environment is relaxed and informal. Focus on gaining insight into real-life situations and industry needs. Most assignments are carried out in project groups of 3 to 5 people. Independent study, with teachers providing knowledge, guidance and counselling.

Grade system

Grade	Description	ECTS	Old Scale
12	Excellent	A	13/11
10	Very good	B	10
7	Good	C	9/8
4	Fair	D	7
02	Meeting minimum requirements	E	6
00	Not meeting the minimum	Fx	5/03
-3	Unacceptable	F	00



Application Times

Please note that you have to apply to the exchange programme in your current year by 20 December. Applications for the host university must be submitted between April and May or September and October (depending on the Trimester), in the year following your initial application.

Going abroad in Trimester 1	Initial Application Form	20 December (current year)
	Host University's Form	April – May (following year)
Going abroad in Trimester 2	Initial Application Form	20 December (current year)
	Host University's Form	September – October (following year)

FIND OUT MORE

ACCOMODATION & LIVING



KEA Housing is an offer to exchange students, studying at KEA for one semester. Exchange students will automatically be offered student accommodation.

The room prices vary between 3,300 and 4,000 DKK per month – including water, heating and electricity. The Internet is a complimentary service.

All residences are located in and around the city centre of Copenhagen and have direct access to public transport, even though everybody uses a bike here in Copenhagen. You will be able to reach campus within a maximum of 15-25 minutes by bike.

[FIND OUT MORE](#)

Living Costs

How much you spend every month outside accommodation very much depends on temper and habit and you know best if you lie in the high or low end of the budget. The below estimates can give you an idea of the expenses to expect while you are in Copenhagen.

Rent 2,500 - 4,000 DKK per month for a room including utilities

Food DKK 1,500 – 3,000 per month

Public Transport DKK 200 – 400 per month

Phone DKK 79 – 200 per month

Internet DKK 150 - 300 per month (often included in the rent)

More on Cost of Living in Copenhagen

 [Numbeo.com](https://www.numbeo.com)

Transport

The public transportation system in Copenhagen is very good and combines underground Metro, overground S-Trains, and buses – most of which run both day and night. All KEA campuses are located close to public transportation.

DSB is the Danish national rail operator. It consists of an over and underground rail network that covers most of Copenhagen and can take you into the rest of the country, as well as the rest of Europe.




However, the best and most popular way to get around Copenhagen is on a bike. Copenhagen is one of the worlds most bike-friendly city and 50 percent of people living in the city use a bike as their main transport.

[LIFE AT KEA](#)

CONTACT FOR INCOMING STUDENTS



If you're interested in the programme or you have any queries, please contact the Edinburgh Napier University's Global Mobility team first:

-  studyabroad@napier.ac.uk
-  0131 455 4574 or 0131 455 3412
-  napier.ac.uk/exchanges

COPENHAGEN SCHOOL OF DESIGN AND TECHNOLOGY

The International Office

Lygten 16

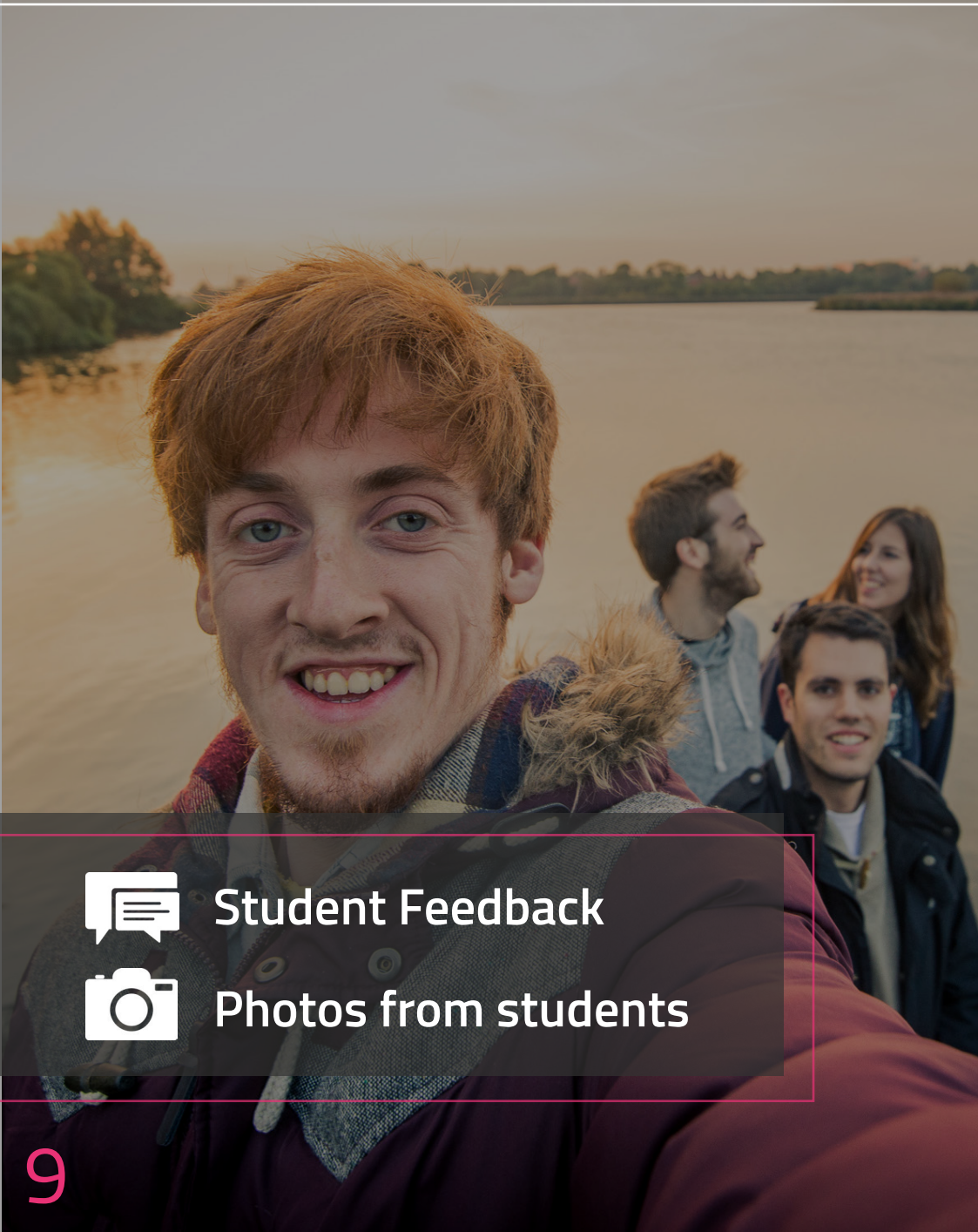
DK-2400 Copenhagen NV

 studievejledning@kea.dk

 + 45 4646 0000

 + 45 4646 0099

STUDENT EXPERIENCES



“**Copenhagen**
is the city of
bicycles”



Student Feedback



Photos from students



All images sourced from the university's official website and social media accounts, except where noted otherwise.

Notice something that we need to fix or update? Please email us studyabroad@napier.ac.uk